



USER MANUAL

WI-LIGHT REMOTE APPLICATION

---

## SUMMARY



Connect to a Stand Alone device with the Wi-light application.....	3
Connect the software smartphone server with the Wi-light application.....	4
Change IP address on Android system .....	6
Change the IP address on iOS System .....	7

## CONNECT TO A STAND ALONE DEVICE WITH THE WI-LIGHT APPLICATION

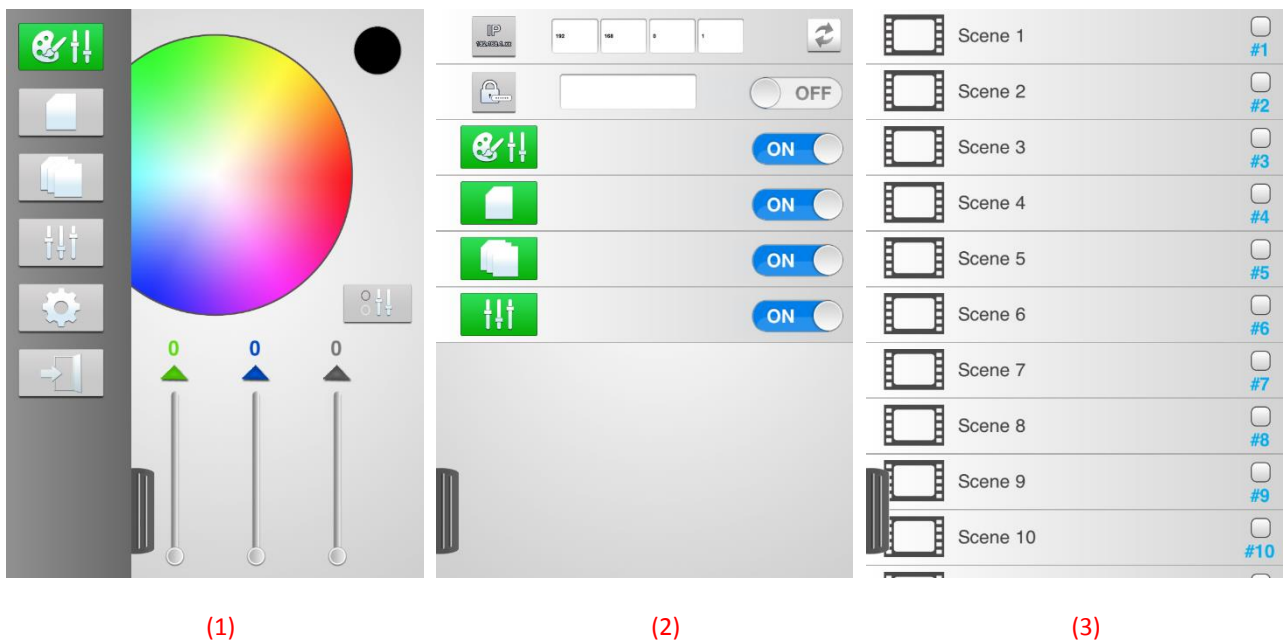
First, you have to connect your Smartphone or tablet to the same network than the device in Infrastructure mode. Then, you have to check the IP addresses if DHCP is not available for your network (see chapters Change IP address for Android or iOS). Refer to the Device Datasheet to connect the device to the good network.

Once connected, launch the Wi-light application.

On the screen, click on the Configuration tab (1). Here, check if the IP address matches with the one of the device. If not, change the field with the good IP address.

Then click on the refresh button to search the device (2) and wait few seconds. **You must validate the IP address with the small button located to the right of the IP address field. Without this confirmation the Wi-Light wont search the Device IP on the network.**

If the « No connected » icon doesn't appear, it means you are connected to a device. Then you can see in the Scenes tabs all the scenes saved in the Stand Alone device memory (3).

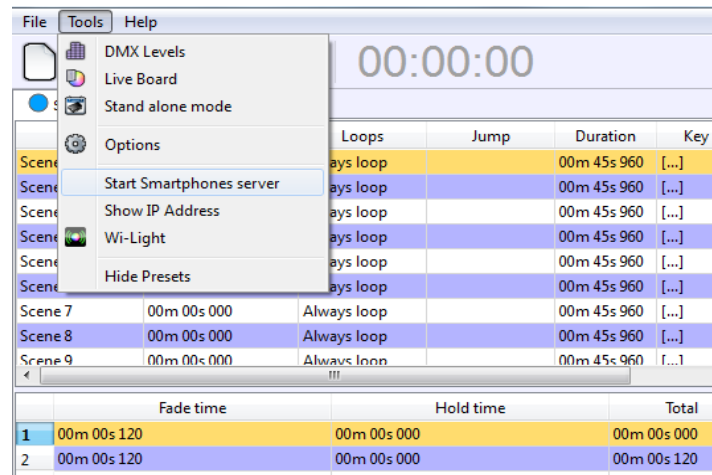


## CONNECT THE SOFTWARE SMARTPHONE SERVER WITH THE WI-LIGHT APPLICATION

With the Wi-light application, you can also communicate with the software, via the smartphone server infrastructure mode.

First, you have to connect your smartphone/tablet to the same network Infrastructure than your computer.

Start the software, open the Tools menu and click on Start Smartphones server.



The Tool menu gives also the possibility to know the IP address of the computer with the option **Show IP Address**. This information is use to know what type of family IP address the access point use. It is from the 3rd field of the IP address.

For example if you have 0 on the 3 rd field, then the smartphone or tablet terminal must use 0. If you have 1, then the terminal must use 1 too or the connection won't be established.

Start the Wi-light application. If you cannot establish the connection. On the screen, click on the configuration tab like in the previous chapter. Check if the IP address matches with the one of your computer. If not, change the field with the good IP address.

Then click on the refresh button to search the computer smartphone server device and wait few seconds. If the « No connected » icon doesn't appear, it means that you are well connected. Then you can see in the Scenes tabs all the scenes coming from the computer.

On the software, click on the Live board icon.



When the Live board appear, you can see what scene button is playing and see the other options like the general Speed and general Dimmer, etc..

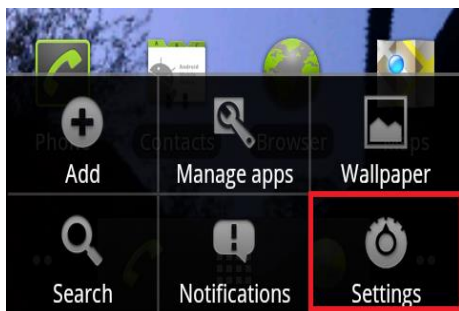


Then you can control devices with both the software and the Wi-Light application in real time.

It is possible to connect up to x10 terminals to the Device or to the Smartphone server of the software at the same time.

## CHANGE IP ADDRESS ON ANDROID SYSTEM

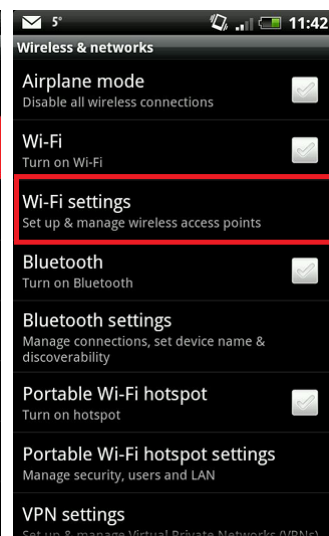
- Go on the terminal settings (1).
- Choose Wireless & networks (2).
- Choose Wi-Fi settings (3).
- Go on advanced (4).
- Check "Use static IP" (5).
- Check or change the IP address to 192.168.0.XXX (except 192.168.0.111).
- Change the Netmask to 255.255.255.0.
- Changing the Gateway is optional.
- Restart your WIFI network to make sure that the new setting is applied (optional)



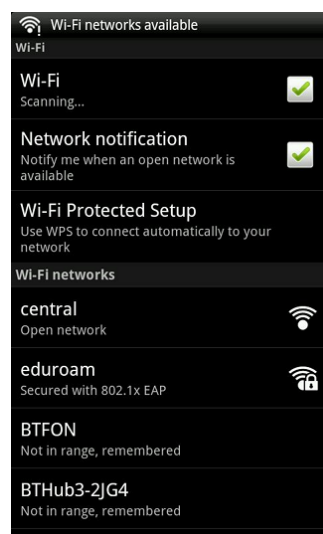
(1)



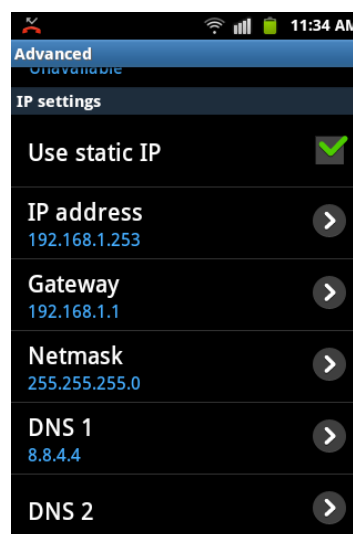
(2)



(3)



(4)



(5)

## CHANGE THE IP ADDRESS ON IOS SYSTEM

- Go to the Settings.
- Click on Wi-Fi.
- Select the network displayed under DEVICES to be connected.
- After connected, then select the Static tab.
- Change IP address to 192.168.0.XXX (except 192.168.0.111).
- Put 255.255.255.0 for Subnet Mask.
- Restart your WIFI network to make sure that the new setting is applied (optional)

