



USER MANUAL

WI-LIGHT REMOTE APPLICATION

V1.0

SUMMARY



1. Smartphone server or Stand alone interface connection from the app to software	3
2. Wi-Light app launching	7
3. Scenes, programs and buttons' modifications	8
4. Modify colours and controls.....	9
5. Manual modification of the DMX channels' levels.....	10
6. General settings	11
7. Wi-light for Windows and Mac.....	12
8. Live board remote.....	13

1. SMARTPHONE SERVER OR STAND ALONE INTERFACE CONNECTION FROM THE APP TO SOFTWARE

With the Wi-light application, you can communicate with the software or with stand alone interface.

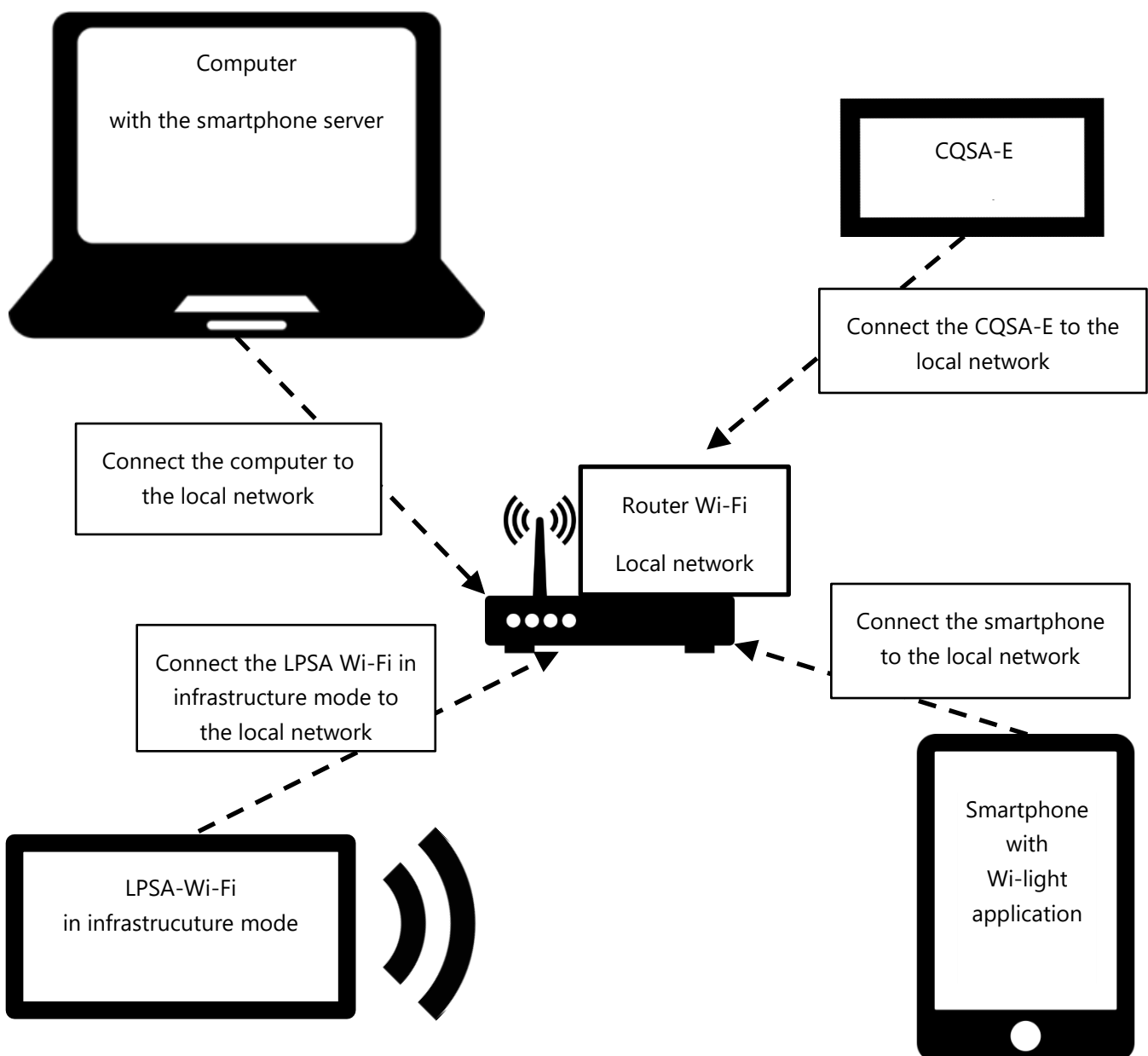
First, connect your smartphone/tablet to the same network than your computer or a compatible stand alone.

Smartphone server : Launch the software, open the **Tools** menu and click on **Start Smartphones server**.

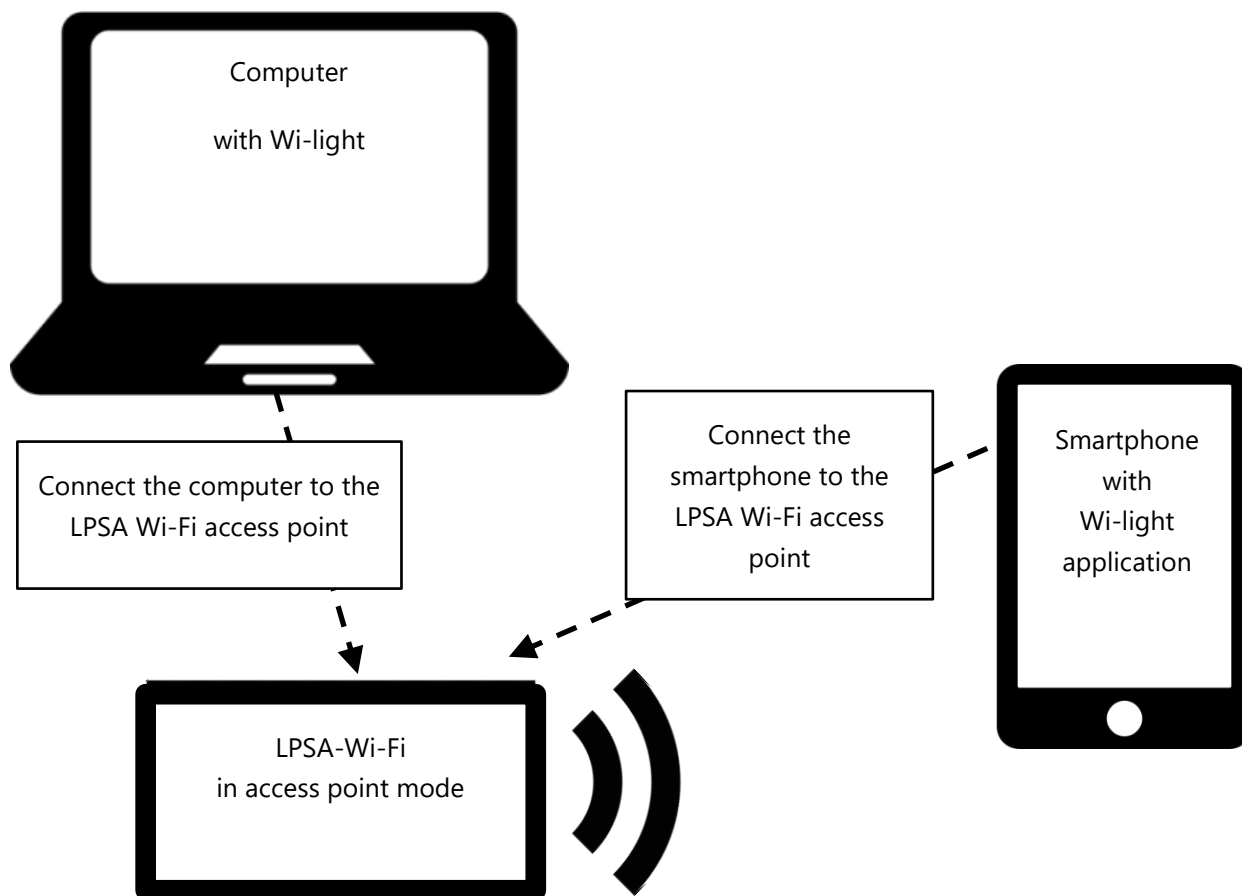
Wi-Fi interfaces : On the first use, the Wi-Fi interface create a new Wi-Fi network with an access point type.

Ethernet interfaces : While on the interface startup, press **Validate** button for 3 seconds to enter in DHCP mode to connect to local network.

LOCAL NETWORK CONNECTION :

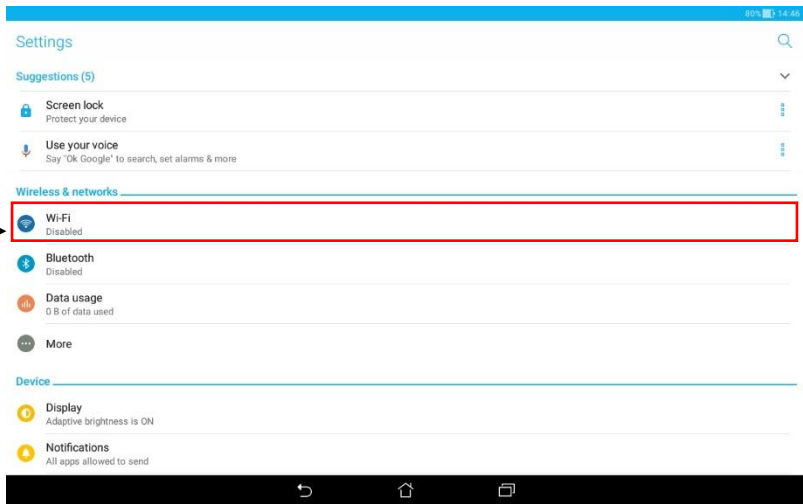


LPSA-WI-FI IN ACCESS POINT MODE :

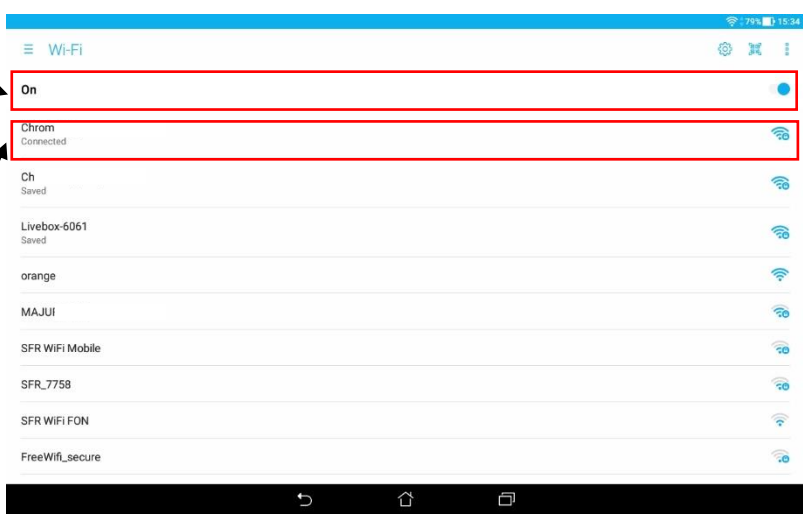


GET CONNECTED ON ANDROID:

1 - Go to settings and click to "Wi-Fi"



2 - Click to turn on the Wi-Fi



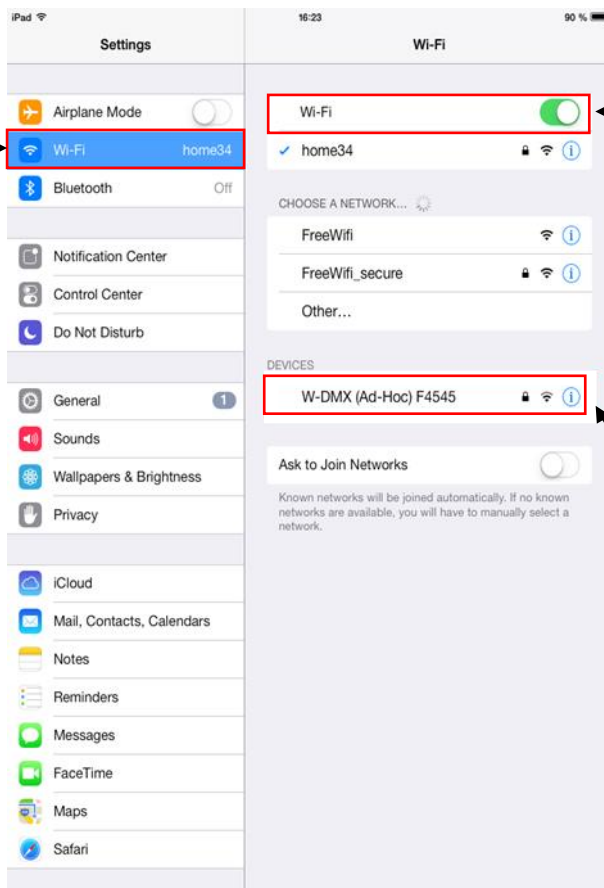
3 - Select the desired Wi-Fi network and enter the password if needed.

(Wi-Fi interfaces access point name: W-DMX FXXX (XXXX are the last 4 numbers of the interface's serial)
Password: 1234567890)

After few seconds, you are connected. You can now launch the app.

GET CONNECTED ON IOS:

1 - Go to settings and click to "Wi-Fi"



2 - Click to turn on the Wi-Fi

3 - Select the desired Wi-Fi network and enter the password if needed.

(Wi-Fi interfaces access point name: W-DMX FXXX (XXXX are the last 4 numbers of the interface's serial)
Password: 1234567890)



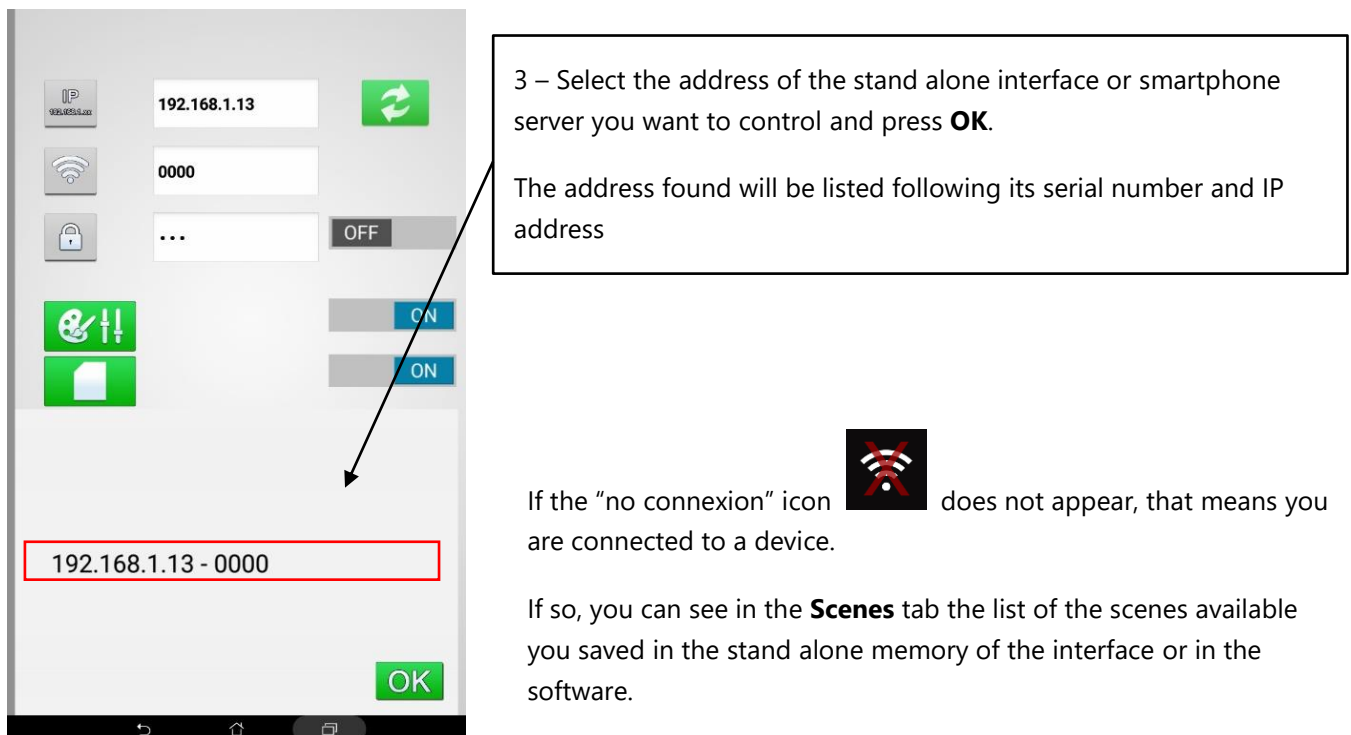
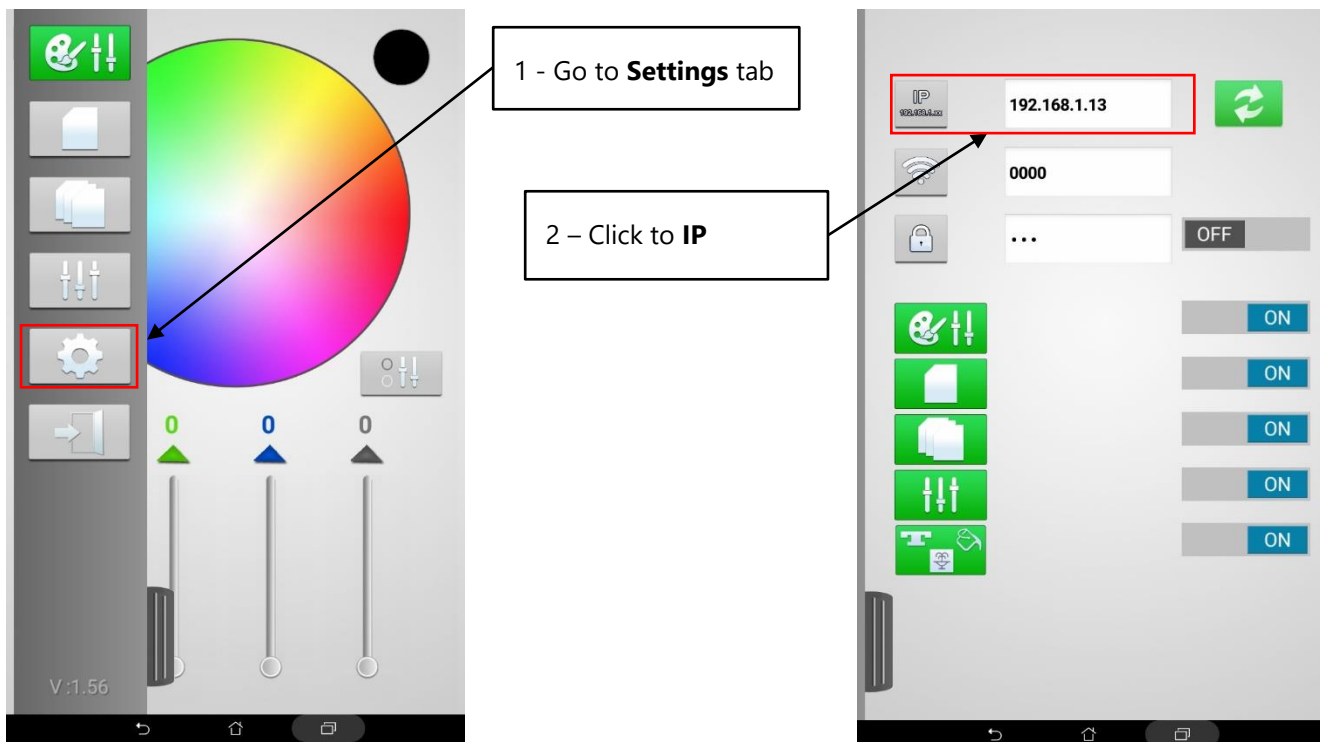
Connexion on Apple devices can take a few minutes the first time.

As soon as the smartphone or tablet is connected to the Wi-Fi network of your interface, you can launch the Wi-Light application.

2. WI-LIGHT APP LAUNCHING

When launched the Wi-Light app will automatically detect the interface's or smartphone server network where the terminal is connected. The IP found will be displayed in the app settings. This step can take a few seconds.

If several interfaces are connected to the same network, click on the refresh icon (on the top right) to seek the devices (wait a few seconds). A window will be displayed where you will be able to choose the device you want to be connected to. Each device is listed following its serial number and IP address.



3. SCENES, PROGRAMS AND BUTTONS' MODIFICATIONS

The scenes list allows you to start/stop scenes by pressing it. The list appears when the connexion is correctly established between the terminal and the stand alone interface, and of course, if some scenes have been written on the interface's memory or created in the smartphone server.

1 – Go to **Scene** tab

2 – Select the desired scene to play it (only 1 scene at the same time)

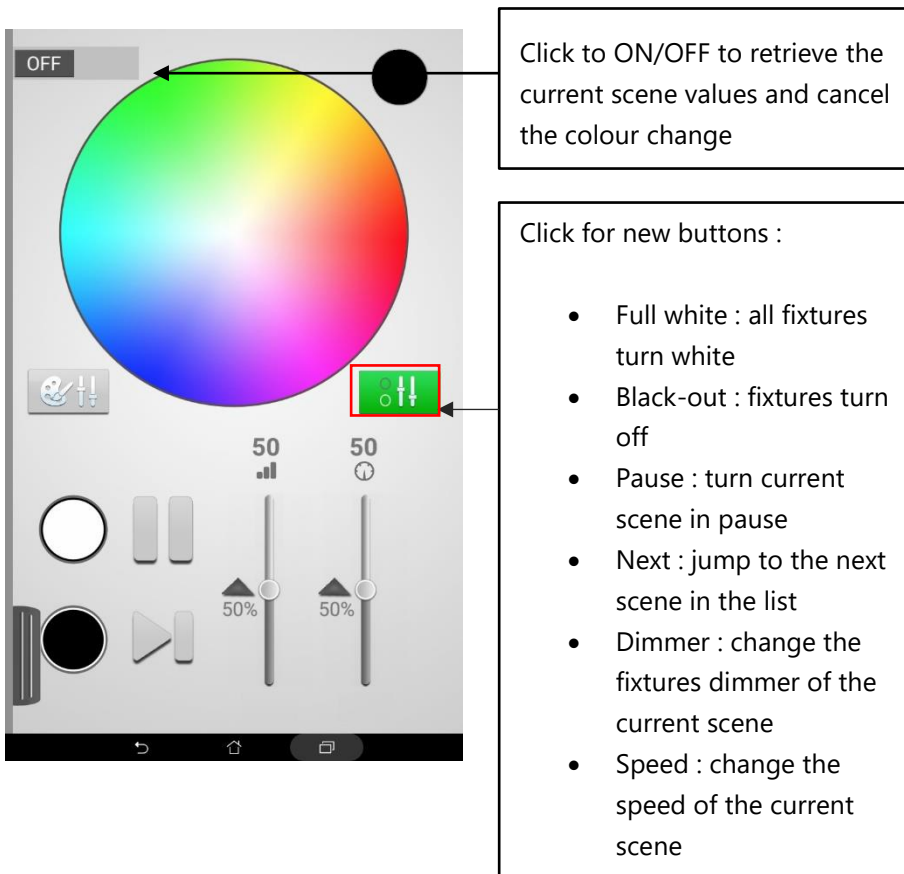
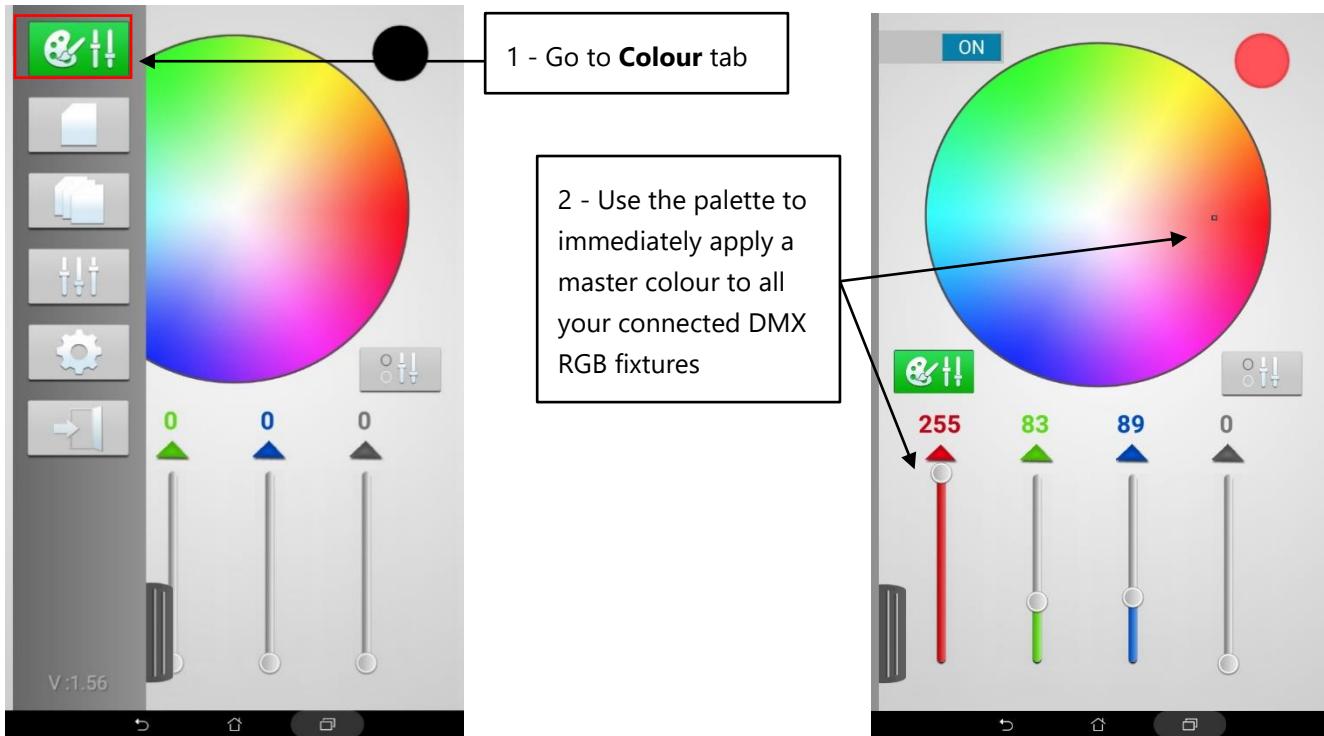
Program tab allows you to control several programs at the same time (only with smartphone server)

Hold a click on a scene or program over 3 seconds to open a new window to change icon, colour and name

The interface includes a color wheel, a list of scenes (e.g., Fade In, Disco, Jazz, Room 1, Wait), a list of programs (Program 1-6), and a scene configuration window with a color palette and icon grid.

4. MODIFY COLOURS AND CONTROLS

With the **Colour** tab from the tabs list. You can modify the colour of all RGB fixtures in a playing scene thanks to the colour palette or faders. Simply touch and use the palette to immediately apply a master colour to all your connected DMX RGB fixtures.



5. MANUAL MODIFICATION OF THE DMX CHANNELS' LEVELS

Select the tab **Channels** in the tabs list. You will see a 32 channels grid where you can modify the DMX levels.

1 - Go to **Channels** tab

2 - Select the universe

3 - Scroll the 32 cells grid over the 512 channels of the current universe

Levels settings remind active until you kill them by unchecking the check box

4 - Click on a channel and set the DMX level

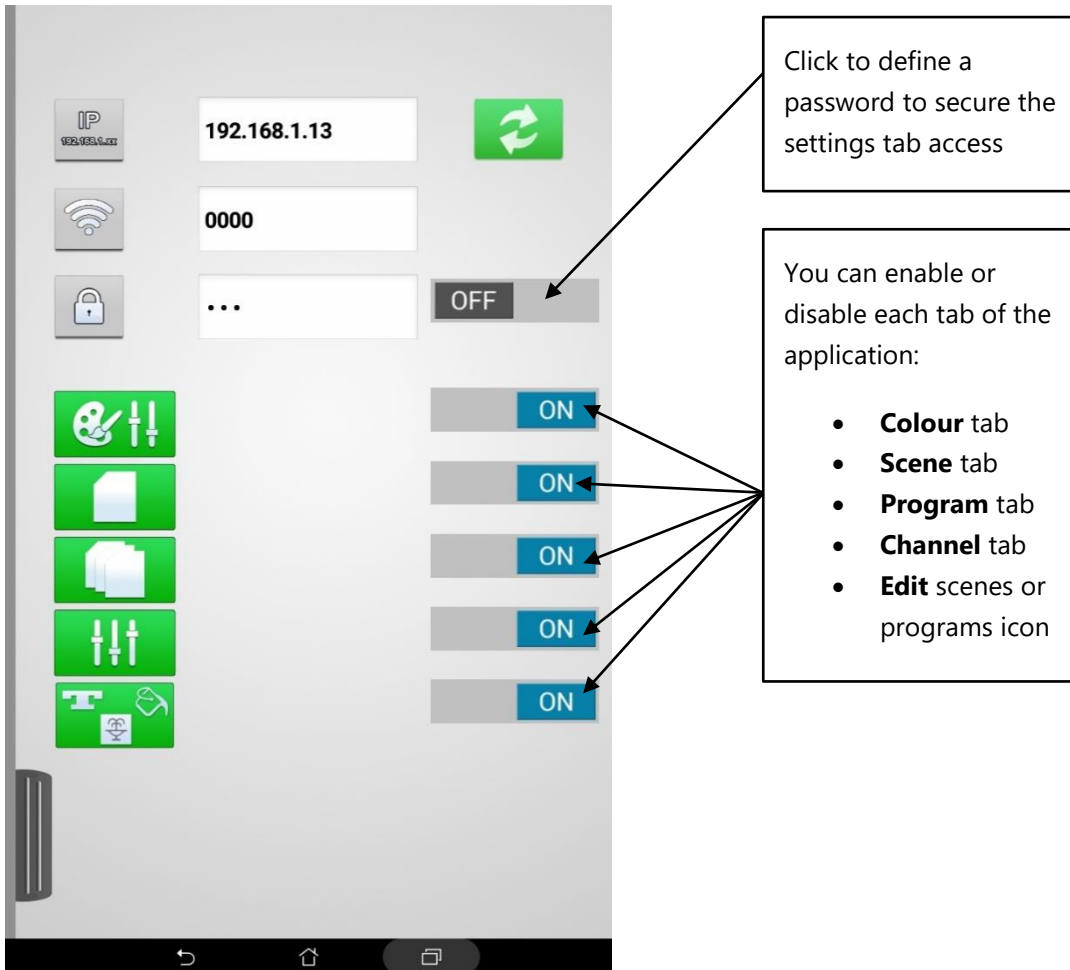
5 - Click **Ok** to apply the modification and see the result in the grid

Channel	Level	Active
#1	160	✓
#2	0	Off
#3	0	Off
#4	Off	Off
#5	Off	Off
#6	0	Off
#7	0	Off
#8	Off	Off
#9	Off	Off
#10	Off	Off
#11	Off	Off
#12	Off	Off
#13	Off	Off
#14	Off	Off
#15	0	Off
#16	Off	Off
#17	Off	Off
#18	Off	Off
#19	Off	Off
#20	Off	Off
#21	Off	Off
#22	Off	Off
#23	Off	Off
#24	Off	Off
#25	Off	Off
#26	Off	Off
#27	Off	Off
#28	Off	Off
#29	Off	Off
#30	Off	Off
#31	Off	Off
#32	Off	Off

6. GENERAL SETTINGS

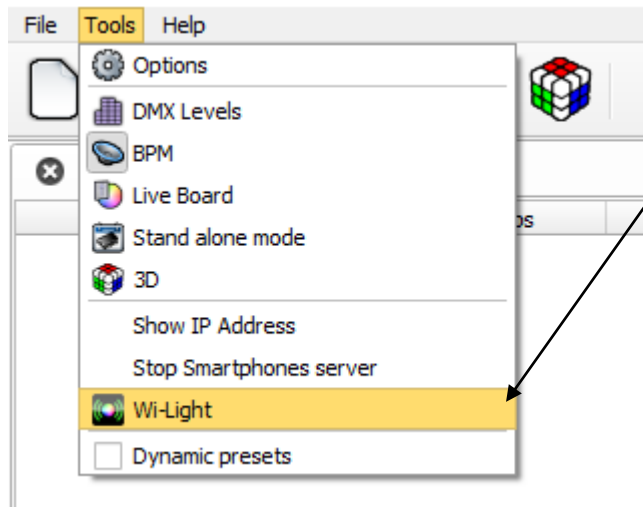
Select the **Settings** tab.

There you can enable/disable the other tabs of the app. You can lock the tabs abilities with a password.

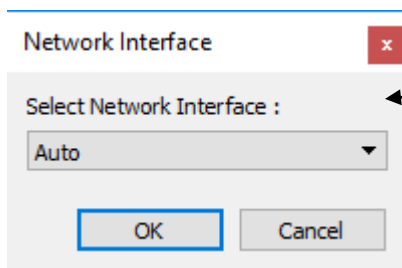


7. WI-LIGHT FOR WINDOWS AND MAC

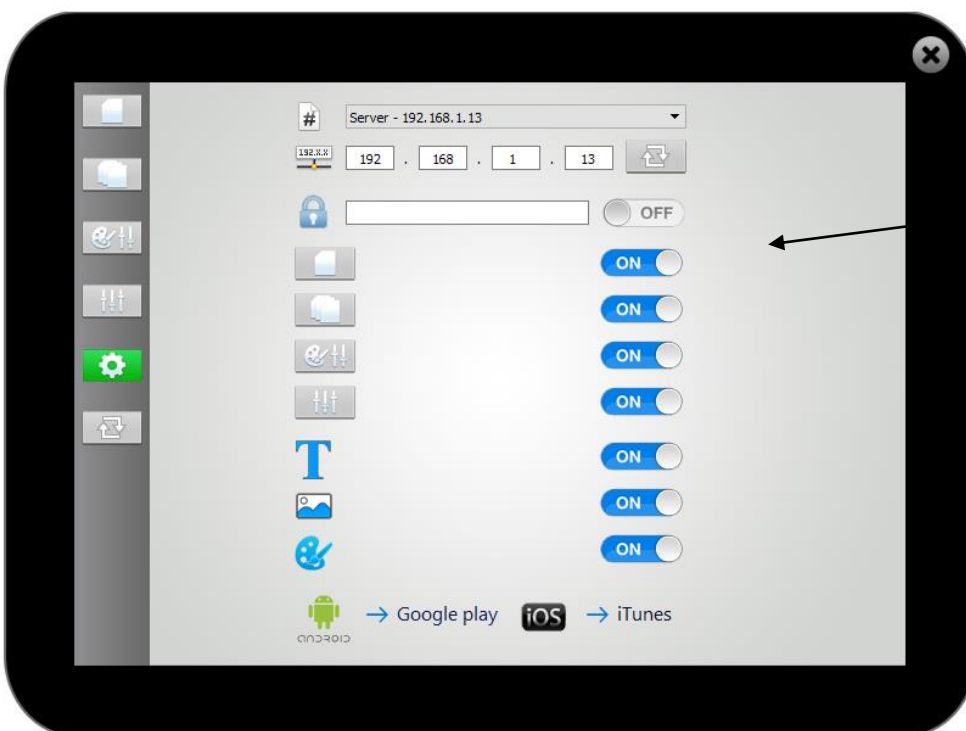
A computer version of Wi-light is available on Windows and Mac.



1- In the software go to **Tools** and Wi-Light to start the application



2- Select the network of the compatible interface or smartphone server



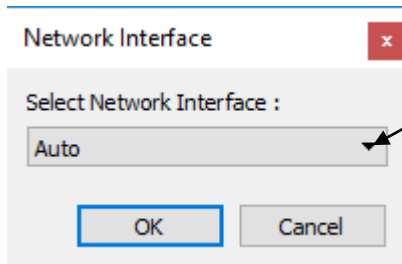
3- Use the application like on the smartphone

8. LIVE BOARD REMOTE

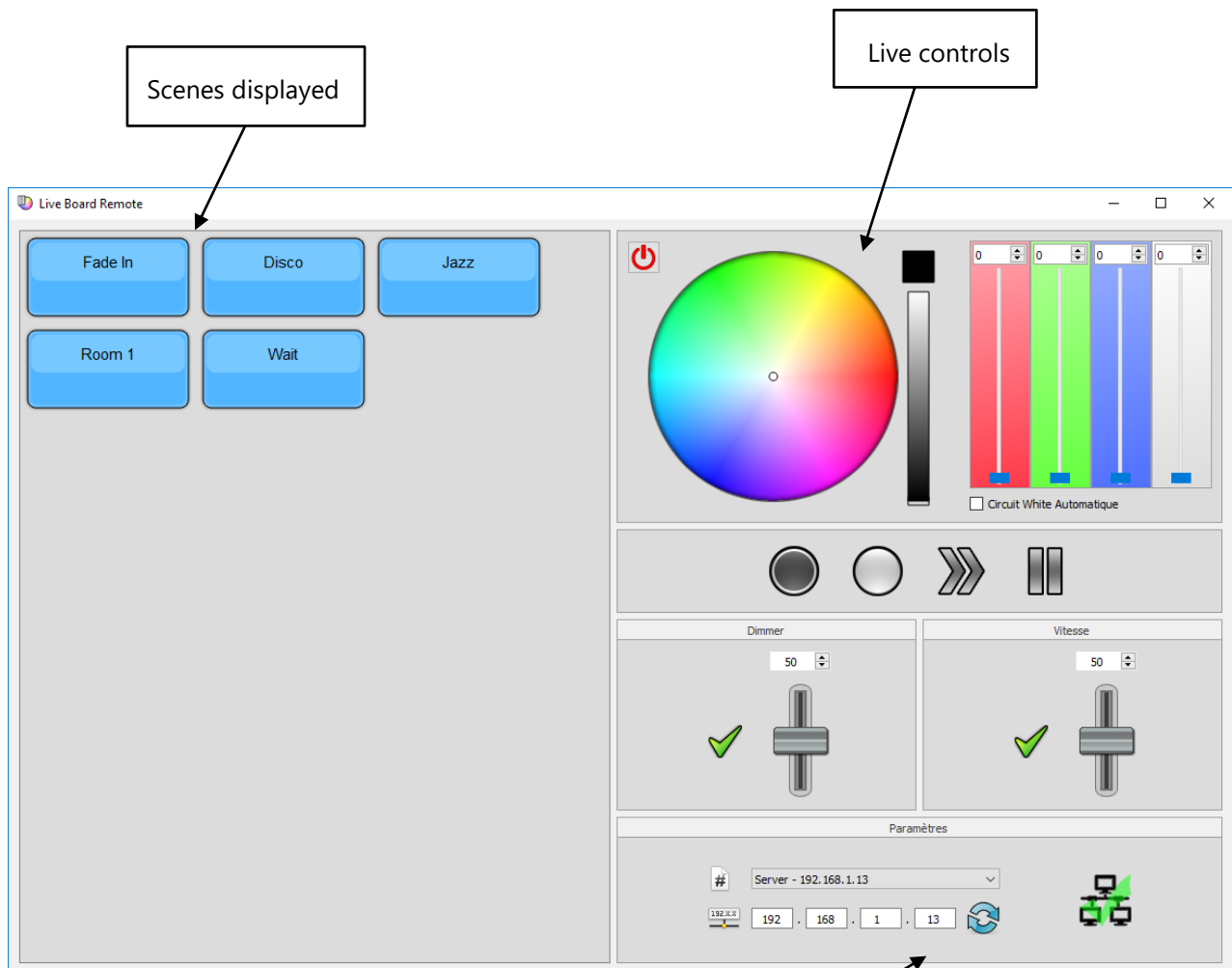
The Live Board Remote allows to control scenes from the smartphone server and a compatible stand alone device as the Wi-light PC.



1- Start Live board remote



2- Select the network of the smartphone server or stand alone interface



IP Address and connection status