





V1.2 202102

Welcome to the world of CHROMATEQ lighting control software.

Please read this manual carefully and thoroughly before using Wi-Light 2.

The information presented here provides a useful introduction to the wide range of features, settings and functions available in this mobile application.

This Wi-Light 2 Manual is written in English and French.  
(Le manuel technique Wi-Light 2 est rédigé en anglais et en français.)

Developed and created in FRANCE.

191 Allée de Lauzard - Bat B, Rdc 1  
34980 St Gély du Fesc - FRANCE  
Web: [www.chromateq.com](http://www.chromateq.com)  
Phone: +33 952210755 / +86 13422062209

Twitter: <https://twitter.com/Chromateq>  
YouTube: <https://www.youtube.com/c/chromateq>  
Facebook: <https://www.facebook.com/ChromateqCompany/>

-----

#### Copyright Information And Disclaimer

Copyright © 2010 - Chromateq  
All rights reserved. No part of this publication may be reproduced, distributed, or transmitted in any form or by any means, including photocopying, recording, or other electronic or mechanical methods, without the prior written permission of the publisher, except in the case of brief quotations embodied in critical reviews and certain other noncommercial uses permitted by copyright law.

For permission requests, write to the publisher, addressed "Attention : Permissions Coordinator," at the address above.

#### Trademark Credits

Microsoft and Windows are U.S. registered trademarks of Microsoft Corporation. Art-Net™ – Designed by and Copyright Artistic Licence Holdings Ltd. All other products mentioned herein may be trademarks of their respective ® companies. MADRIX is a registered trademark of inoage GmbH.

**SUMMARY**

---

SUMMARY.....	3
QUICK START GUIDE.....	4
SMARTPHONE SERVER OR STANDALONE CONNECTION.....	4
WIFI/ETHERNET/DMX NETWORK EXAMPLE DIAGRAM.....	4
CONNECT ON ANDROID.....	4
CONNECT ON IOS.....	5
LAUNCHING THE WI-LIGHT 2 APP.....	5
PAGE DESCRIPTIONS.....	6
TRIGGER PAGE.....	6
CUSTOMIZING ZONES AND BUTTONS.....	6
COLOUR AND LIVE CONTROL PAGE.....	7
CHANNELS PAGE.....	8
TIMELINE PAGE.....	8
INTERFACE SETTINGS.....	9
GENERAL SETTINGS.....	10
ADVANCED NETWORK MODE.....	10

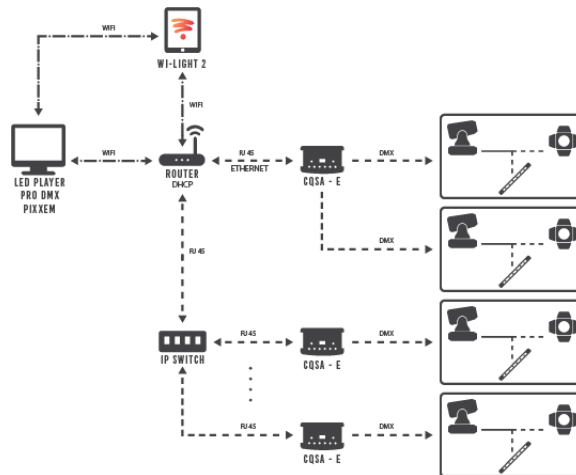
## QUICK START GUIDE

- To control a DMX Ethernet interface : 1) Connect the DMX Ethernet interface to the WiFi router
- To control lighting software : 1) Launch the software on a computer connected to the WiFi network
- 2) Connect the Mobile device to the WiFi network.
  - 3) Launch the Wi Light 2 App
  - 4) Begin configuring and using the Wi Light app

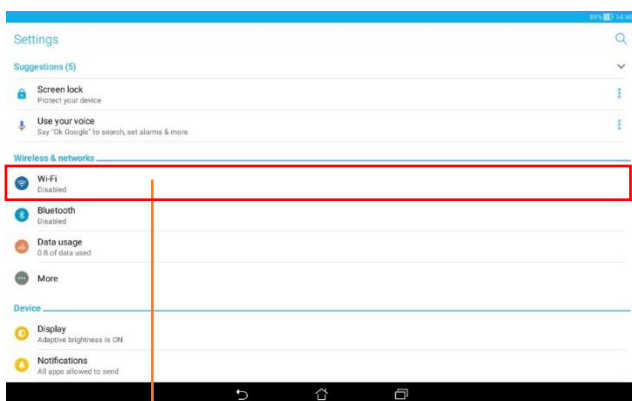
## SMARTPHONE SERVER OR STANDALONE CONNECTION

With the Wi-light 2 application, you can communicate with lighting control software or with standalone Ethernet interfaces. First, connect your smartphone/tablet to the same WiFi network or WiFi access point as your computer or interface. Software Smartphone Server: Launch the software, open the Tools menu and click on Start Smartphones server. Ethernet Interfaces: When the interface is powered, hold the Confirm (check mark) button for a few seconds to enter DHCP mode in order to connect the interface to the local network. "dh" will flash on the LED display to indicate DHCP mode.

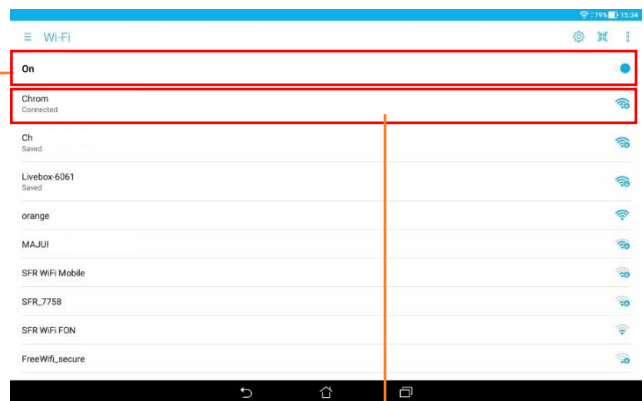
## WiFi/ETHERNET/DMX NETWORK EXAMPLE DIAGRAM



## CONNECT ON ANDROID



1- Go to the general settings and click on "Wi-Fi"



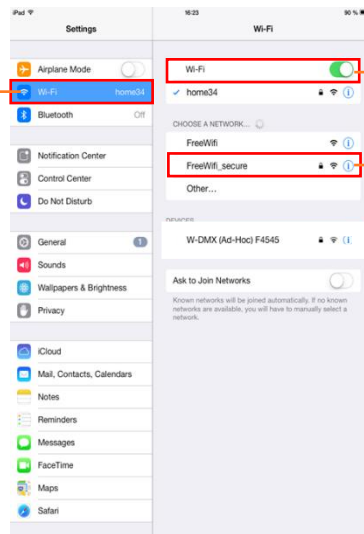
2- Turn on Wi-Fi on your mobile

3- Select the desired Wi-Fi network and enter the password if needed

After a few seconds, your mobile device will connect to the network and you can now launch the Wi Light 2 app. The app will detect lighting control software or DMX Ethernet devices automatically and display them in the settings page.

## CONNECT ON IOS

1- Go to the general settings and click on "Wi-Fi"



2- Turn on the Wi-Fi on your mobile

3- Select the desired Wi-Fi network and enter the password if needed



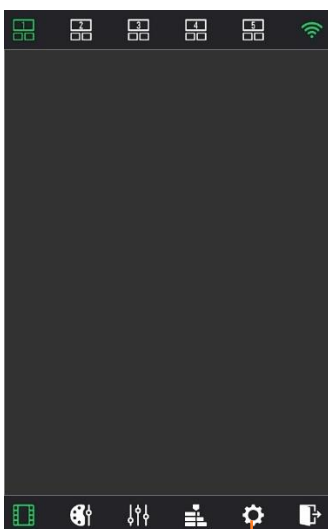
*New network connections on Apple devices may require a few minutes to establish*

After a few seconds, the mobile will be connected to the network and you can now launch the Wi Light 2 app. The app will detect lighting control software or DMX Ethernet devices automatically and display them in the settings page.

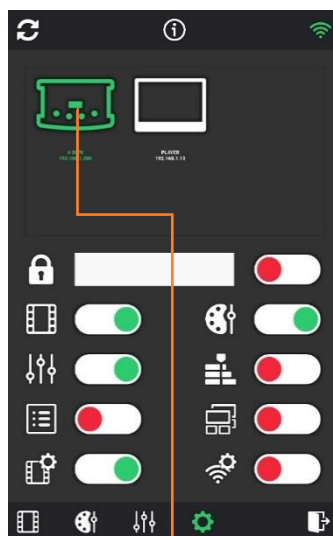
IP addresses are managed by the WiFi router. In DHCP mode, the IP addresses are assigned automatically, but it is also possible to set static IP addresses for the smartphone/tablet, device and computer. DHCP mode is recommended to simplify connections.

## LAUNCHING THE WI-LIGHT 2 APP

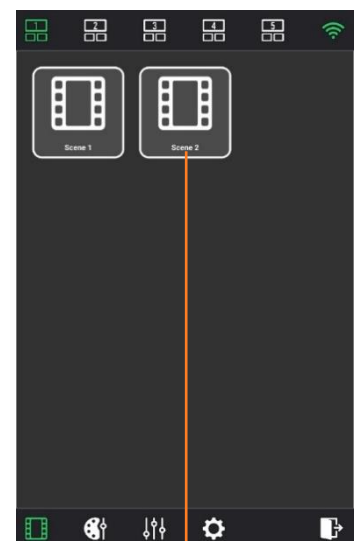
When you launch the Wi-Light 2 app, it will automatically detect the interface or smartphone server on the network where your smartphone/tablet is connected. Each detected device is listed and displayed in the Settings page. If multiple interfaces are connected to the same network, select the interface you want to use. You can select and control only 1 device per time.



1- Go to Settings page

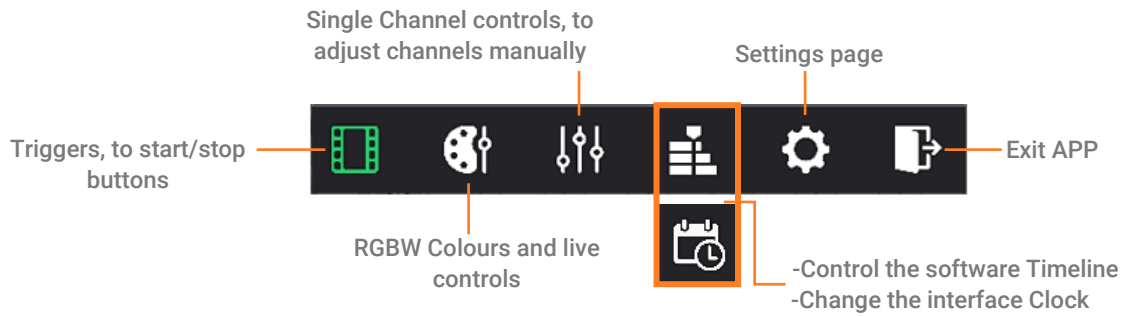


2- Select your device

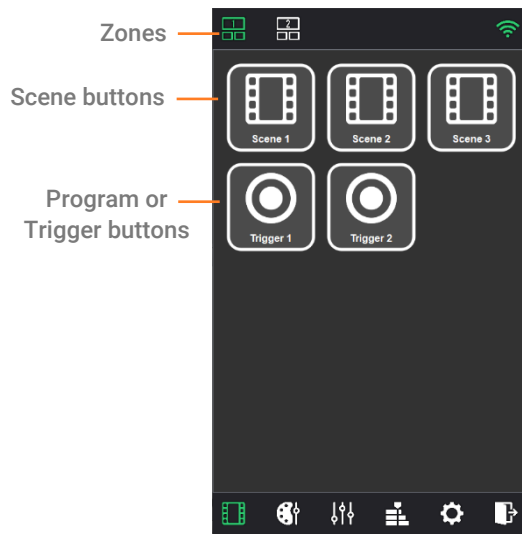


3- The content of your device or project is displayed in each zone. Press buttons to start/stop content.

## PAGE DESCRIPTIONS

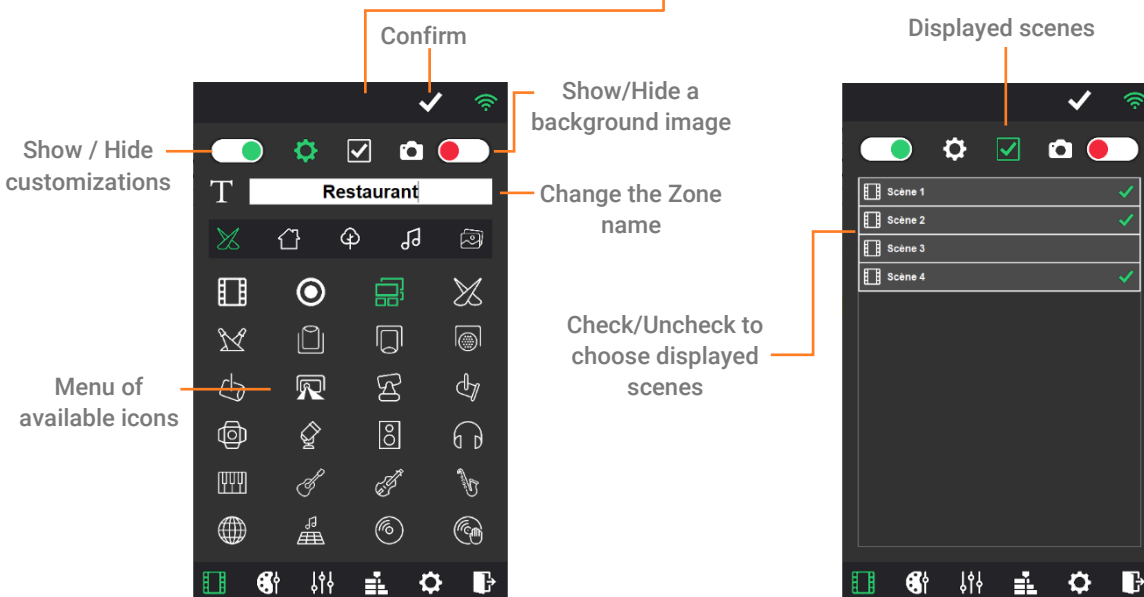


## TRIGGER PAGE

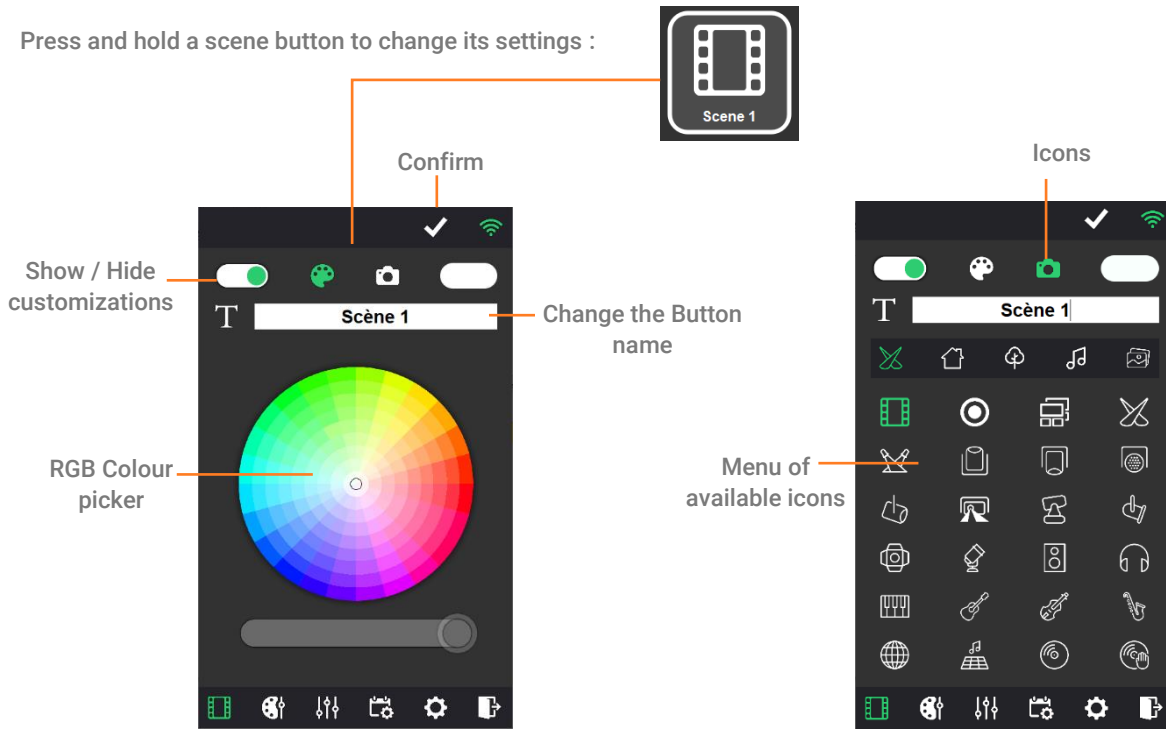


## CUSTOMIZING ZONES AND BUTTONS

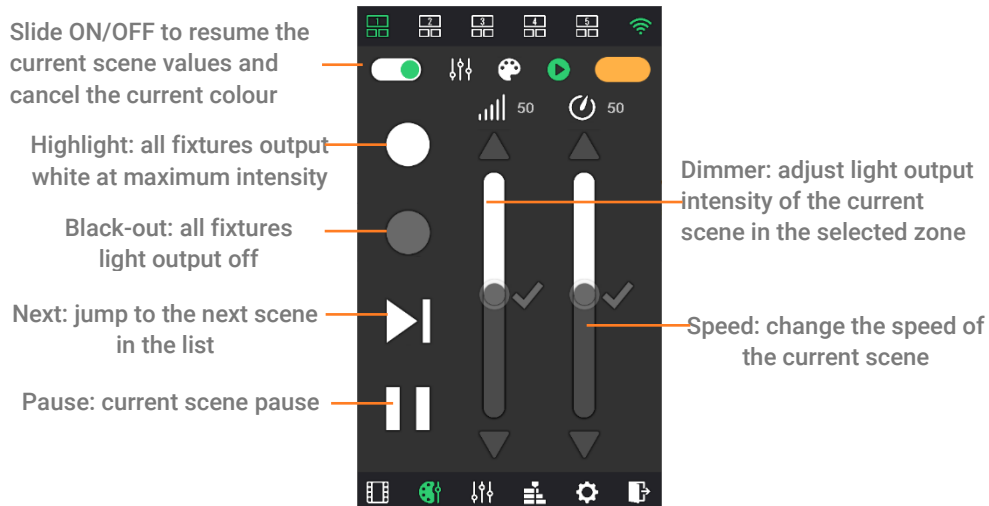
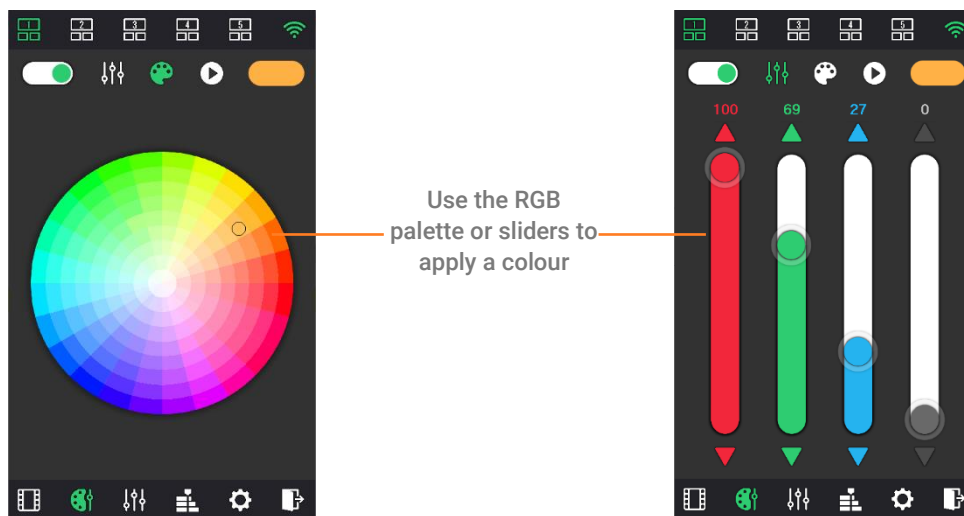
Press and hold a zone icon to change its settings:



Press and hold a scene button to change its settings :

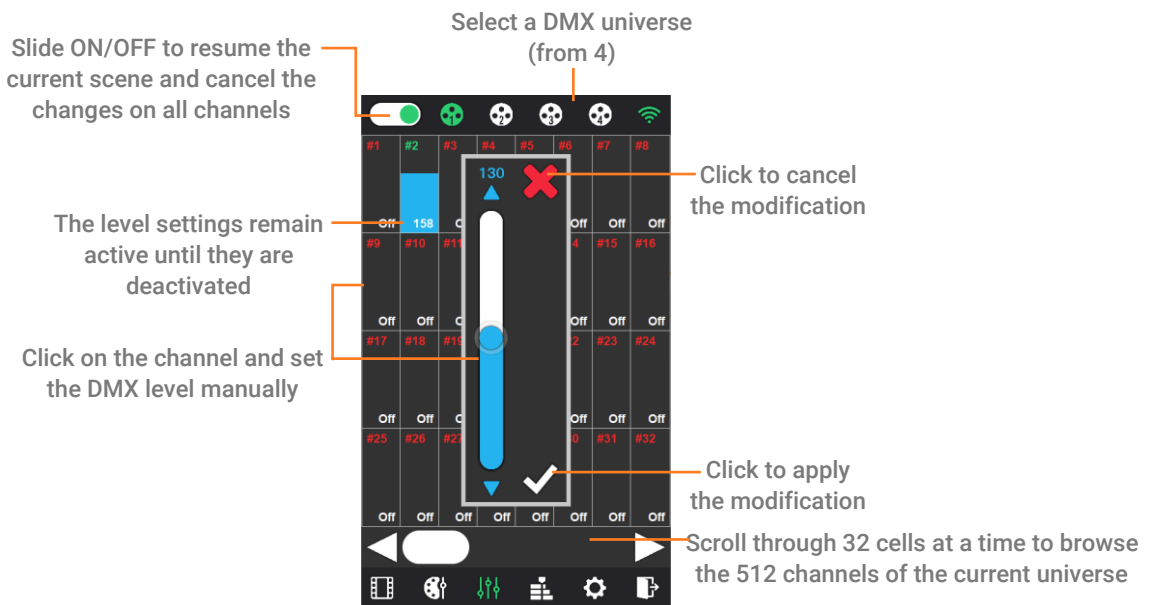


## COLOUR AND LIVE CONTROL PAGE



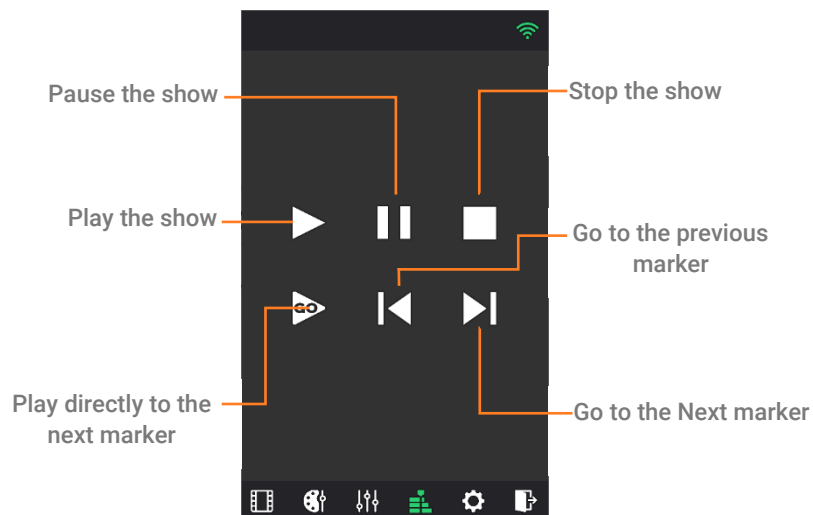
## CHANNELS PAGE

For controlling all channels manually and individually.



## TIMELINE PAGE

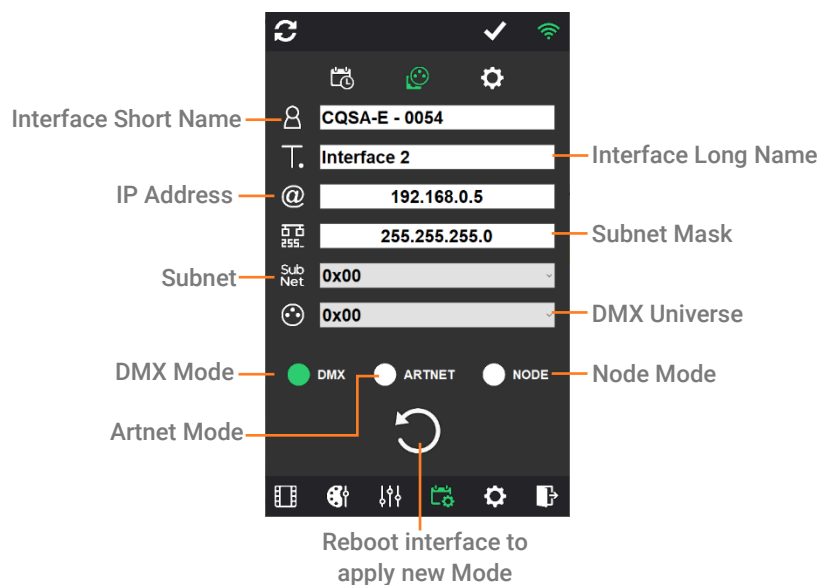
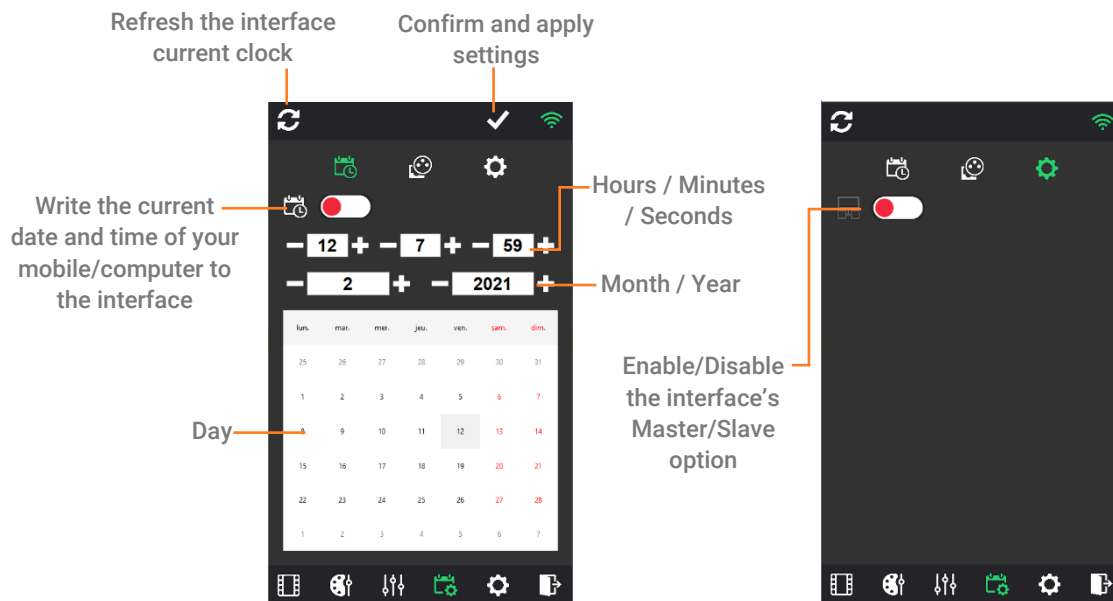
For controlling the software timeline. If the show has several timeline tabs, only the current tab is controlled.





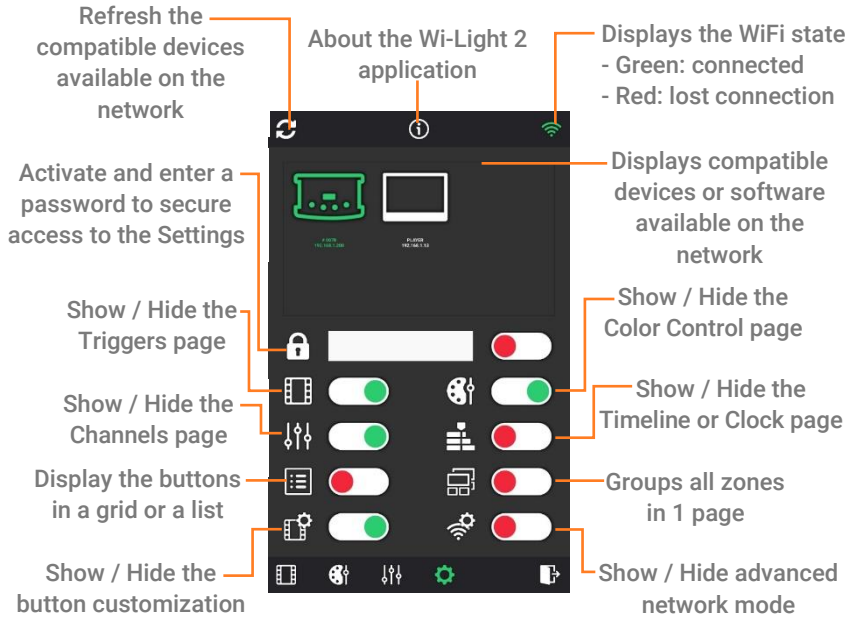
## INTERFACE SETTINGS

For setting the selected standalone interface time and date, choosing master/slave option, and network configuration.



## GENERAL SETTINGS

For enabling or disabling various Wi-Light 2 page and display options, selecting the device or software that you want to control, and password security setting (to prevent unauthorized users from changing advanced settings).



## ADVANCED NETWORK MODE

For choosing the network card manually and setting the IP address of the target device you want to connect with. In normal use, this option is not necessary. But when a VPN is used, It is useful for selecting the right network card or server.

