

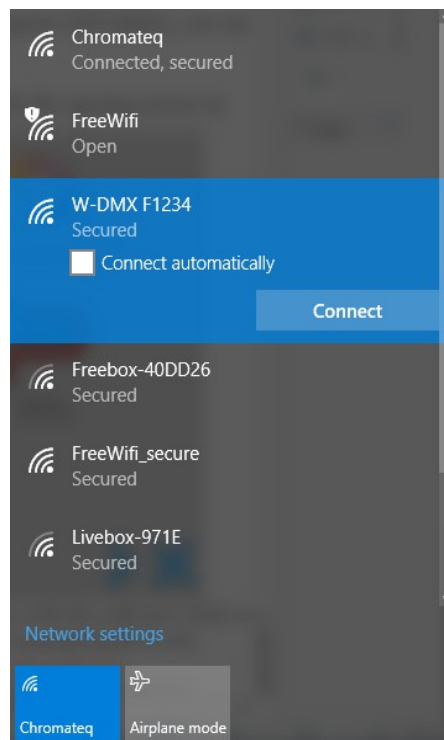
Tutorial for WiFi interfaces recovery

Problem :

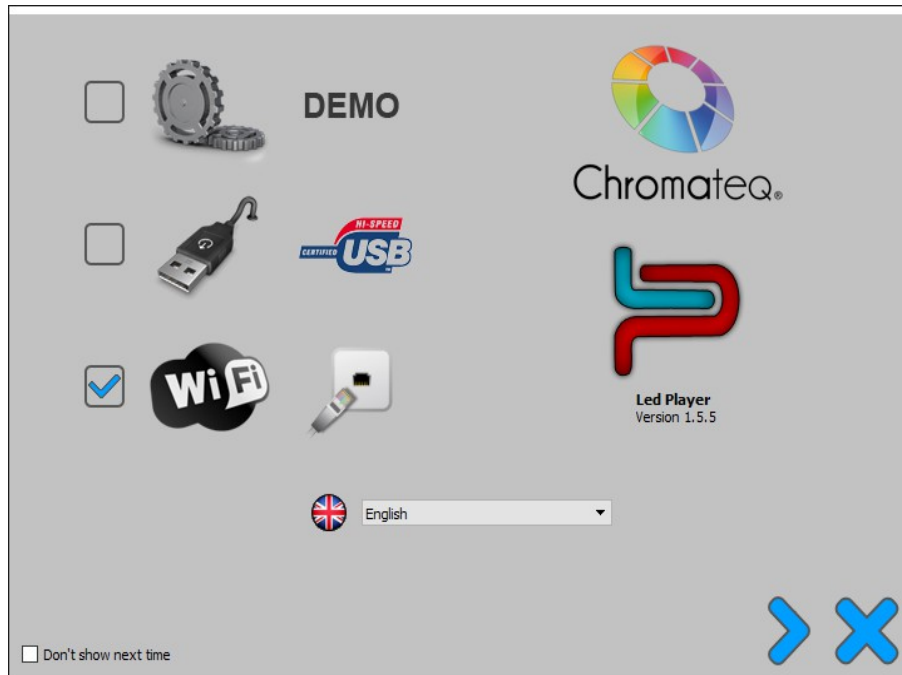
- Interface normally connect to the network.
- After a few seconds, red LED turn off.
- Then, it's impossible to communicate with the interface.

How to recover interfaces :

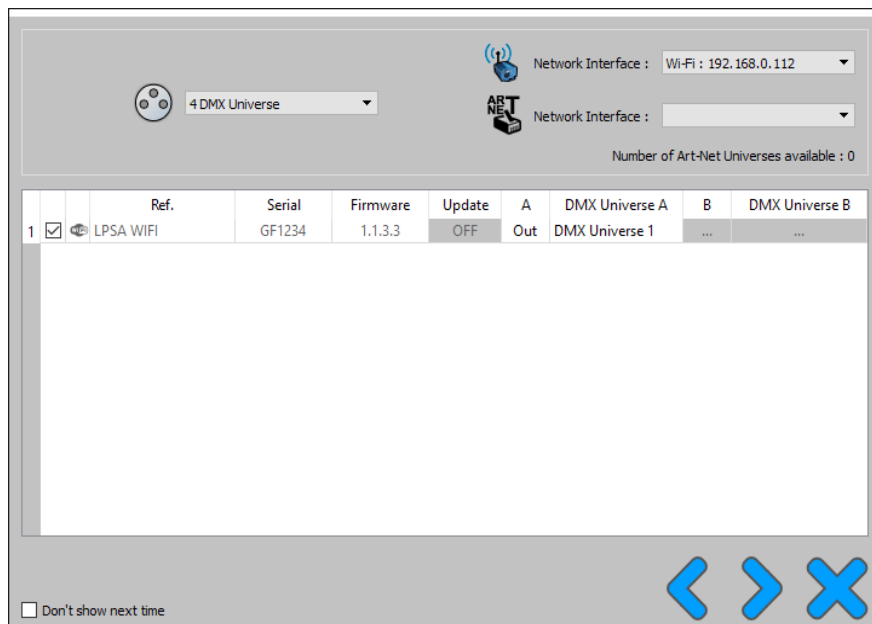
- Plug the interface and wait for it to create the network (green LED blinks), you can let the red LED going off.



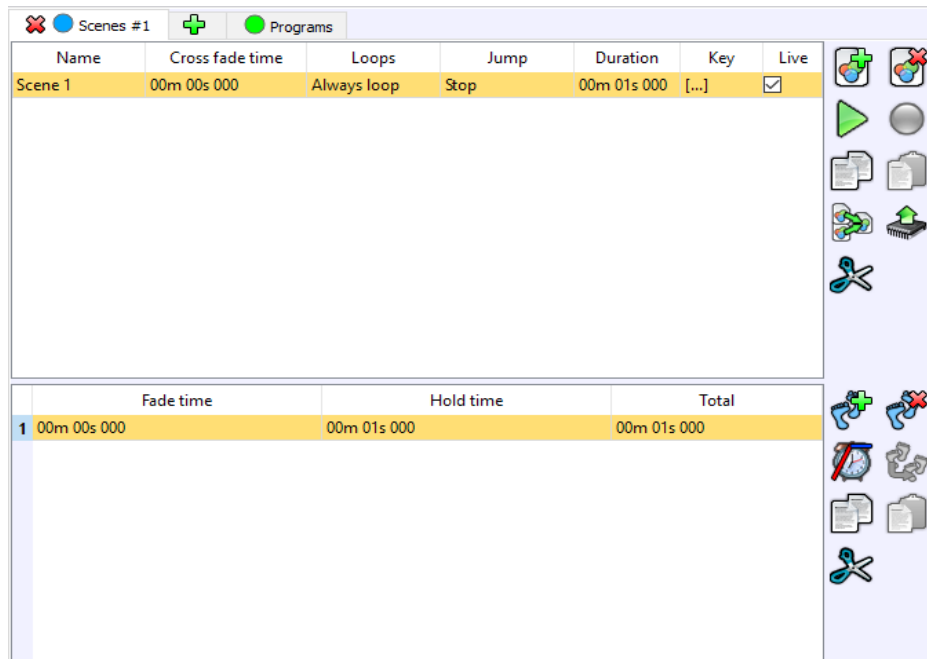
- Connect to the Wifi interface network with your computer.
- Open the software. Check WiFi and uncheck USB and let the opening screen on.



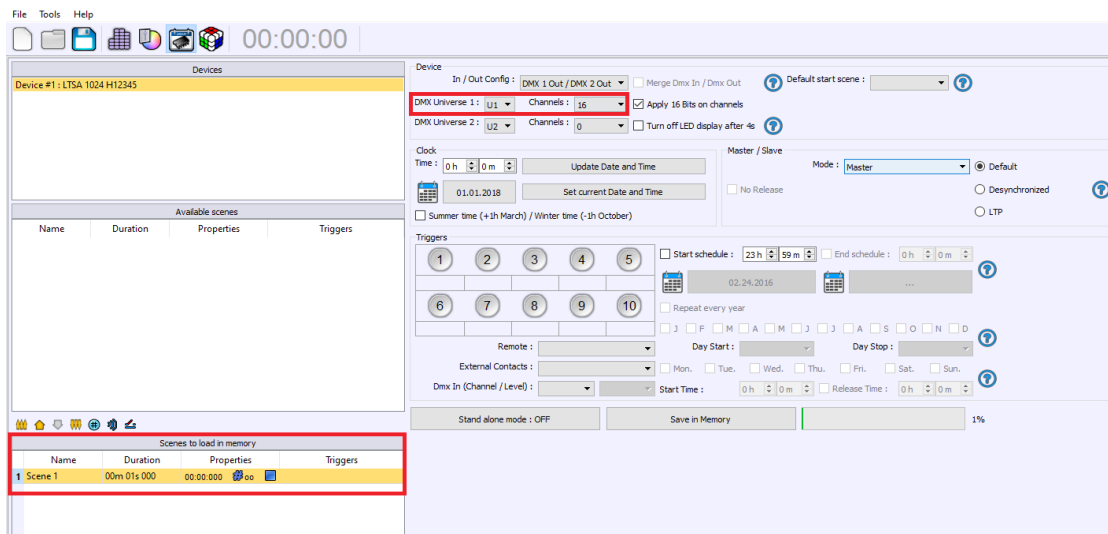
- Hold on the software start at this step.
- Unplug/plug the interface.
- Wait the green LED is flashing.
- Continue with the software start and wizard. Launch the interface detection with the software (click on Next, the blue arrow) (Select the good network interface if the manual mode is set).
- When the card is opened, **quickly click on Next to open the software before the LED turn off again or you will need to restart the recovery process.**



- When the software open and the interface detected, you need to write at least a scene in the memory. Create a project with one scene of one step.



- Then, click on the Stand Alone Mode button.
- Drag and drop the scene in the Scenes to load in memory tab and change the number of Stand Alone channels or it won't work.



- Save this scene in Memory.

After this manipulation.

Warning, the timing to connect to the interface is short, it is possible to do the manipulation several times, by unplugging/plugging the interface between two tries. Make sure the Led LED does not turn off during the recovery process or you will have to restart the interface by power it again.